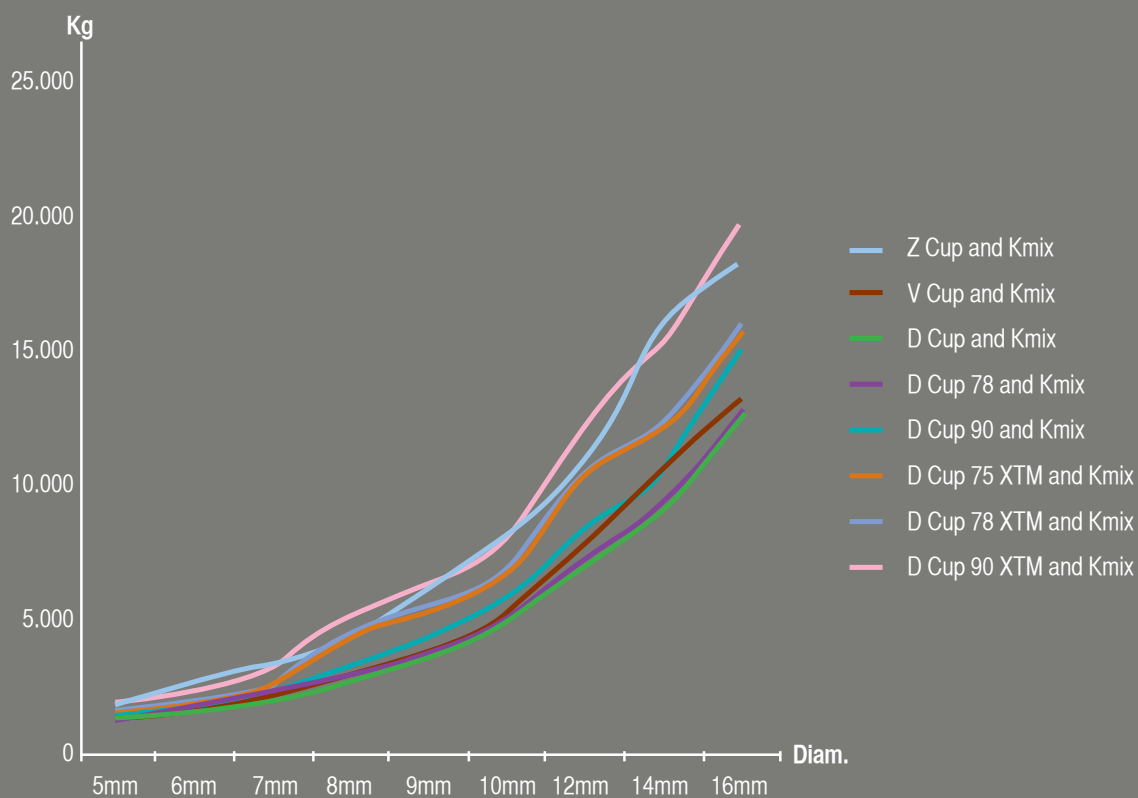
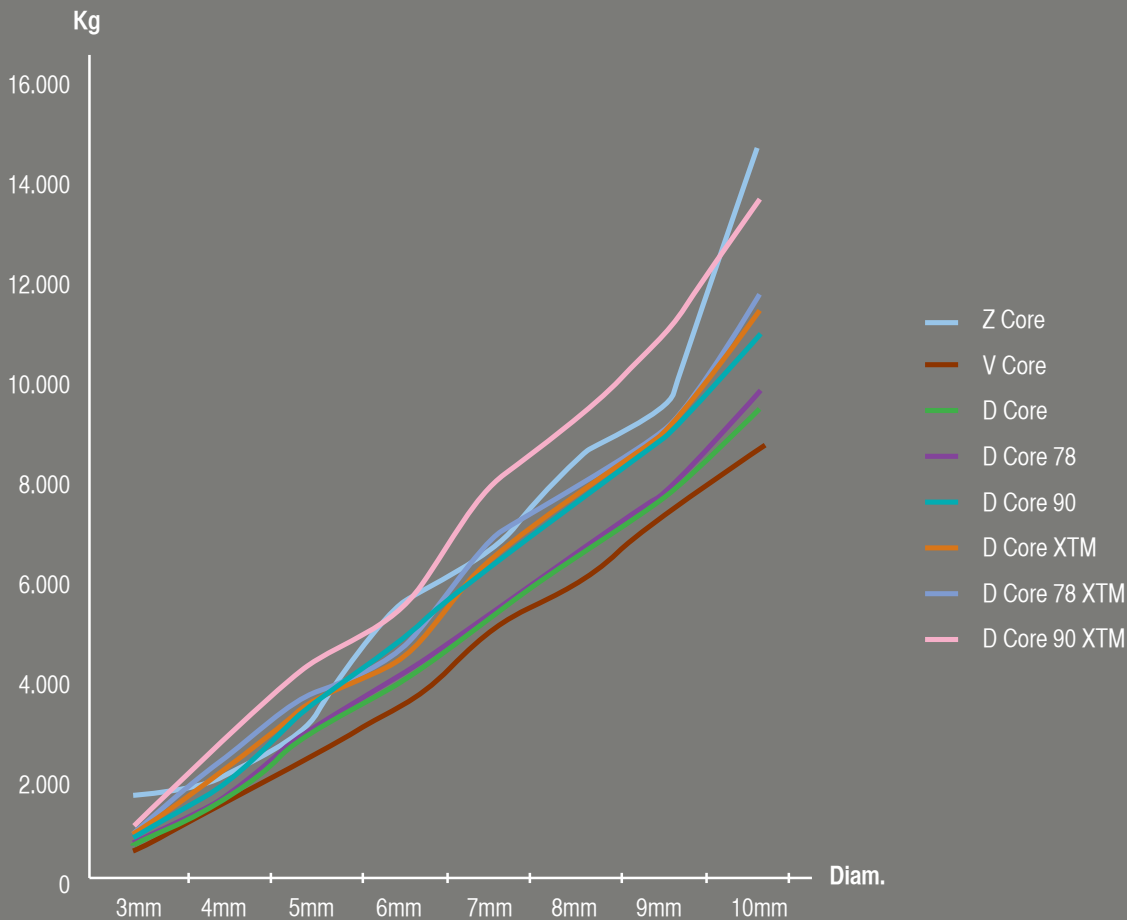


ROPESGUIDE

PRO RACE

[Breaking Loads]

14 ROPES GUIDE



BREAKINGLOADS

PRO RACE

[Guidelines for Ropes dimensions]

Main Halyard	Mast length x 2,5
Main Halyard double	Mast length x 3,5
Genoa/ Jib Halyard	Mast length x 2
Main Halyard double	Mast length x 2,5
Spinnaker Halyard	Mast length x 2,5
Spinnaker Sheet/ Guy	Mast length x 2,5
Jib Sheet	Mast length x 0,5
Genoa Sheet	Mast length x 1
Main Sheet	Mast length x 2,5
Reef 1	Mast length x 2,5
Reef 2	Mast length x 3
Cunningham	Mast length x 1
Kicking Strap	Mast length x 2
Main Outhaul	Mast length x 2
Mooring	Mast length x 0,5

Metric System

Description	[Suggested Diameters					mm]
	less 25ft	25ft to 30ft	31ft to 40ft	41ft to 55ft	55ft plus	
Main Halyard	7	7	7	10/12	12/14	
Genoa/ Jib Halyard	6	6/7	8	10	12/14	
Spinnaker Halyard	6	6	7	8/9	10/12	
Top Lift	6	8/10	7	8	10/12	
Main Sheet	8	8	10	10/12	12/14	
Genoa/ Jib Sheet	8	8	10	10/12	12/14	
Spinnaker Sheet	7	7	8	10	12	
Spinnaker Guy				10	12/14	

[Breaking Strength

Kg]

		2mm	3mm	4mm	5mm	6mm	7mm	8mm	9mm	10mm	12mm	14mm	16mm
Z-Core	gr/ mt	x	8	14	25	33	48	65	79	97	148	186	246
	Kg	x	1.650	2.000	3.100	5.600	6.500	8.500	9.300	14.600	16.500	18.500	25.000
V-Core	gr/ mt	x	7	12	23	30	43	59	72	88	134	168	223
	Kg	x	580	1.450	2.450	3.460	5.100	6.000	7.500	8.700	12.000	15.100	18.500
D-Core	gr/ mt	3	5	9	17	25	31	41	51	61	93	125	165
	Kg	370	700	1.500	3.000	4.000	5.200	7.450	7.600	9.500	13.000	16.000	20.500
D-Core 78	gr/ mt	3	5	9	16	21	30	41	50	61	93	117	155
	Kg	381	721	1.545	3.090	4.120	5.356	6.644	7.828	9.785	13.390	16.480	21.115
D-Core 90	gr/ mt	3	6	10	18	24	35	47	58	70	107	135	178
	Kg	457	900	1854	3500	4800	6.400	7.800	9.000	11.000	15.500	19.000	25.000
D-Core 75 XTM	gr/ mt	x	7,4	12	18	25	34	45	57	68	x	x	x
	Kg	x	840	2.300	3.600	4.425	6.600	7.740	9.120	11.400	x	x	x
D-Core 78 XTM	gr/ mt	x	7,4	12	18	25	34	45	57	68	x	x	x
	Kg	x	865	2.369	3.708	4.558	6.798	7.972	9.394	11.742	x	x	x
D-Core 90 XTM	gr/ mt	x	9	12	21	29	40	53	67	80	x	x	x
	Kg	x	1.008	2.760	4.320	5.310	7.920	9.288	10.944	13.680	x	x	x
Z-Cup and Kmix	gr/ mt	x	x	x	30	34	44	64	83	100	155	209	284
	Kg	x	x	x	1.800	2.500	3.200	4.100	6.000	8.100	10.500	16.000	18.000
V-Cup and Kmix	gr/ mt	x	x	x	27	30	40	57	74	90	139	188	255
	Kg	x	x	x	1.160	1.340	1.900	2.800	3.800	5.200	7.800	10.600	13.100
D-Cup and Kmix	gr/ mt	x	x	x	19	22	28	48	52	64	95	132	172
	Kg	x	x	x	1.200	1.500	1.800	2.600	3.600	4.800	7.200	9.000	12.500
D-Cup 78 and Kmix	gr/ mt	x	x	x	19	22	28	48	52	63	98	132	179
	Kg	x	x	x	1.220	1.530	1.840	2.700	3.690	4.900	7.300	9.200	12.650
D-Cup 90 and Kmix	gr/ mt	x	x	x	22	26	33	56	61	74	115	154	209
	Kg	x	x	x	1.380	1.800	2.200	3.200	4.200	5.600	8.400	10.000	15.000
D-Cup 75 XTM and Kmix	gr/ mt	x	x	x	22	27	38	52	55	73	114	155	205
	Kg	x	x	x	1500	1.850	2.350	3.600	4.700	6.200	9.500	11.950	15.500
D-Cup 78 XTM and Kmix	gr/ mt	x	x	x	22	27	38	55	55	73	114	155	205
	Kg	x	x	x	1500	1.900	2370	4.430	5.240	6.650	10.570	12.100	15.800
D-Cup 90 XTM and Kmix	gr/ mt	x	x	x	24	30	42	57	61	80	125	171	226
	Kg	x	x	x	1863	2.346	2.981	5.300	6.200	7.900	12.600	15.180	19.596

Imperial System

Description	[Suggested Diameters					inches]
	less 25ft	25ft to 30ft	31ft to 40ft	41ft to 55ft	55ft plus	
Main Halyard	9/32"	9/32"	9/32"	3/8" / 1/2"	1/2" / 9/16"	
Genoa/ Jib Halyard	1/4"	1/4" / 9/32"	5/16"	3/8"	1/2" / 9/16"	
Spinnaker Halyard	1/4"	1/4"	9/32"	5/16" / 1/3"	3/8" / 1/2"	
Top Lift	1/4"	5/16" / 3/8"	9/32"	5/16"	3/8" / 1/2"	
Main Sheet	5/16"	5/16"	3/8"	3/8" / 1/2"	1/2" / 9/16"	
Genoa/ Jib Sheet	5/16"	5/16"	3/8"	3/8" / 1/2"	1/2" / 9/16"	
Spinnaker Sheet	9/32"	9/32"	5/16"	3/8"	1/2"	
Spinnaker Guy				3/8"	1/2" / 9/16"	

[Breaking Strength Lb]

		1/2"	1/8"	5/32"	3/16"	1/4"	9/32"	5/16"	1/3"	3/8"	1/2"	9/16"	5/8"
Z-Core	lb	x	5,1	9,1	17,1	22,4	32	43,7	53,4	65	99,2	124,9	165,4
	ft	x	3.638	4.409	6.834	12.346	14.330	18.739	20.503	32.187	36.376	40.786	55.116
V-Core	lb	x	5	8	15	20	29	40	48	59	90	113	150
	ft	x	1.279	3.197	5.401	7.628	11.244	13.228	16.535	18.180	26.455	33.290	40.786
D-Core	lb	3	3	6	11	17	21	28	34	41	62	84	111
	ft	370	1.543	3.307	6.614	8.818	11.464	14.220	16.755	20.944	28.660	35.274	45.195
D-Core 78	lb	3	3	6	11	14	20	28	34	41	62	79	104
	ft	380	1.590	3.406	6.812	9.073	11.808	14.646	17.258	21.572	29.520	36.332	46.551
D-Core 90	lb	3	4	7	12	16	23	32	39	47	72	90	120
	ft	410	1.984	4.087	7.716	10.582	14.110	17.196	19.842	24.251	34.172	41.888	55.116
D-Core XTM	lb	x	5	8	12	17	23	30	38	46	x	x	x
	ft	x	1.852	5.071	7.937	9.755	14.551	17.064	20.106	25.133	x	x	x
D-Core 78 XTM	lb	x	5	8	12	17	23	30	38	46	x	x	x
	ft	x	1.907	5.223	8.175	10.048	14.987	17.576	20.709	25.887	x	x	x
D-Core 90 XTM	lb	x	6	9	14	20	27	35	45	53	x	x	x
	ft	x	2.222	6.085	9.524	11.707	17.461	20.477	24.127	30.159	x	x	x
Z-Cup and Kmix	lb	x	x	x	20	23	30	43	56	67	104	140	191
	ft	x	x	x	3.968	5.512	7.055	9.039	13.228	17.857	23.149	35.274	49.683
V-Cup and Kmix	lb	x	x	x	18	20	27	38	50	60	93	126	171
	ft	x	x	x	2.557	2.954	4.189	6.173	8.378	11.464	17.196	23.369	28.881
D-Cup and Kmix	lb	x	x	x	13	15	19	32	35	43	64	89	116
	ft	x	x	x	2.646	3.307	3.968	5.732	7.937	10.582	15.873	19.842	27.558
D-Cup 78 and Kmix	lb	x	x	x	13	15	19	32	35	42	66	89	120
	ft	x	x	x	2.690	3.373	4.057	5.952	8.135	10.803	16.094	20.283	27.888
D-Cup 90 and Kmix	lb	x	x	x	15	17	22	38	41	50	77	104	141
	ft	x	x	x	3.042	3.968	4.850	7.055	9.259	12.346	18.519	22.046	33.069
D-Cup 75 XTM and Kmix	lb	x	x	x	15	18	26	37	40	49	77	104	138
	ft	x	x	x	3.307	4.079	5.181	9.700	11.464	14.551	23.179	26.345	34.172
D-Cup 78 XTM and Kmix	lb	x	x	x	15	18	26	35	37	49	77	104	138
	ft	x	x	x	3.307	4.189	5.225	9.766	11.552	14.661	23.303	26.676	34.833
D-Cup 90 XTM and Kmix	lb	x	x	x	16	20	28	38	41	54	84	115	152
	ft	x	x	x	4.107	5.172	6.572	11.685	13.669	17.417	27.778	33.466	43.202